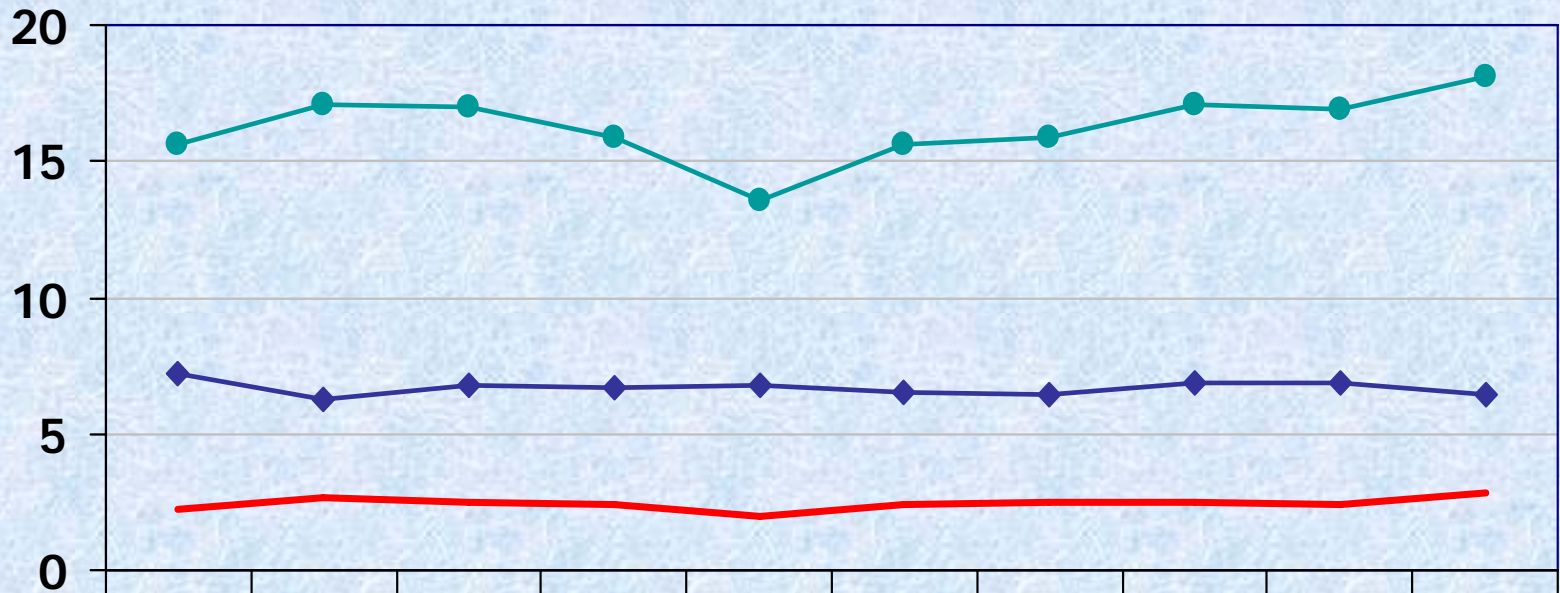


Infant Mortality Disparity By Race: Indiana, 1997-2006

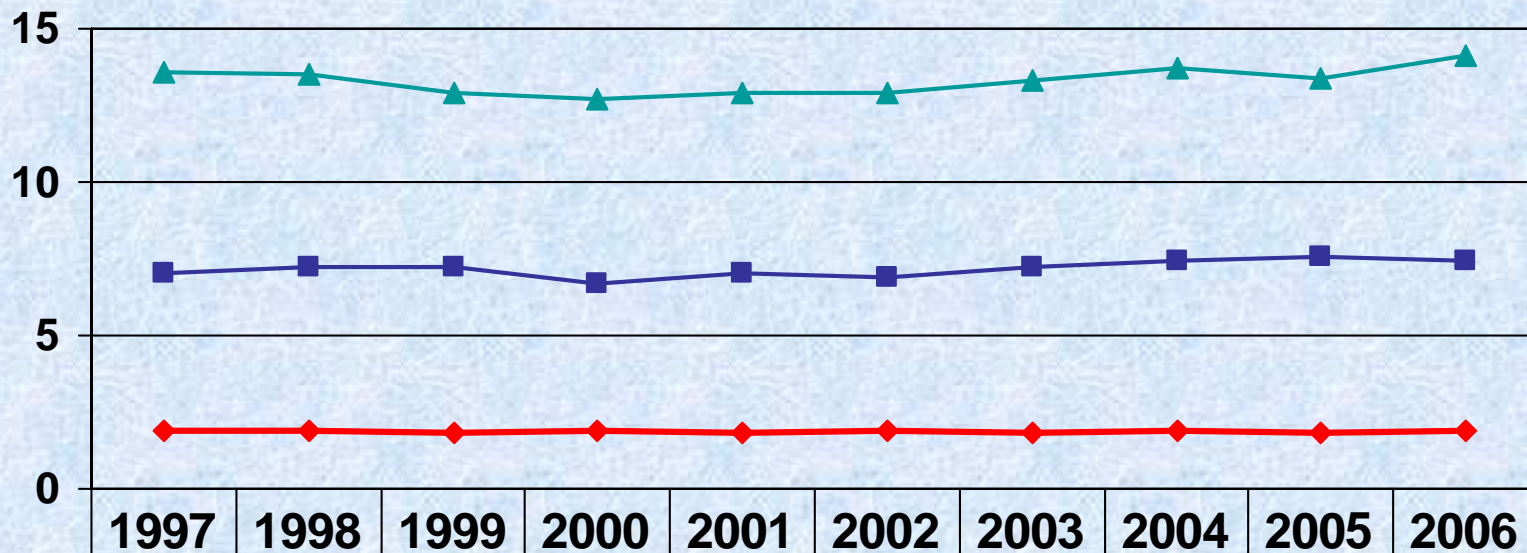


	1997	1998	1999	2000	2001	2002	2003	2004	2005	2006
◆ White	7.2	6.3	6.8	6.7	6.8	6.5	6.4	6.9	6.9	6.4
● Black	15.6	17.1	17.0	15.9	13.6	15.6	15.9	17.1	16.9	18.1
— Disparity	2.2	2.7	2.5	2.4	2.0	2.4	2.5	2.5	2.4	2.8

Note: IMR infant deaths/1,000 live births

Source: Indiana State Department of Health, PHSD, Data Analysis Team, 2008

Low Birthweight Disparity by Race of Mother: Indiana Residents, 1997-2006

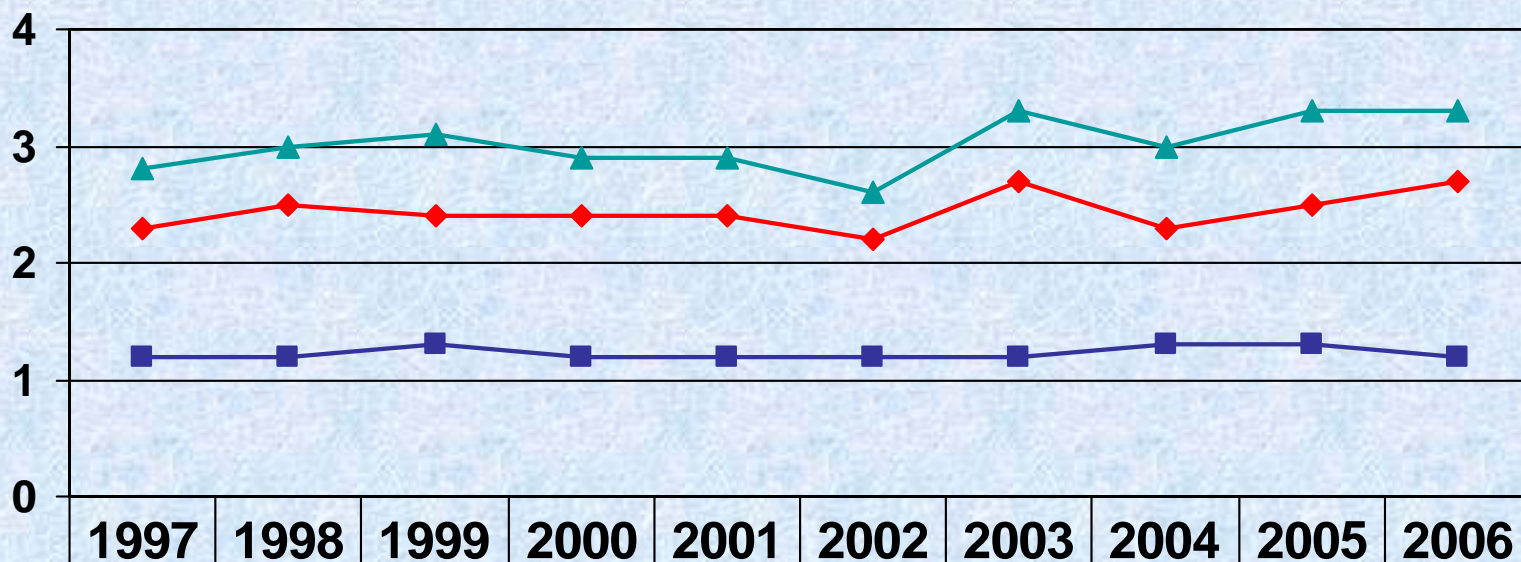


	1997	1998	1999	2000	2001	2002	2003	2004	2005	2006
■ White	7.0	7.2	7.2	6.7	7.0	6.9	7.2	7.4	7.6	7.4
▲ Black	13.6	13.5	12.9	12.7	12.9	12.9	13.3	13.7	13.4	14.1
◆ Disparity	1.9	1.9	1.8	1.9	1.8	1.9	1.8	1.9	1.8	1.9

Note: Low birthweight is less than 2,500 grams (5 lb 8 oz).

Source: Indiana State Department of Health, PHSD, Data Analysis Team, 2008

Very Low Birthweight Disparity by Race of Mother: Indiana Residents, 1997-2006

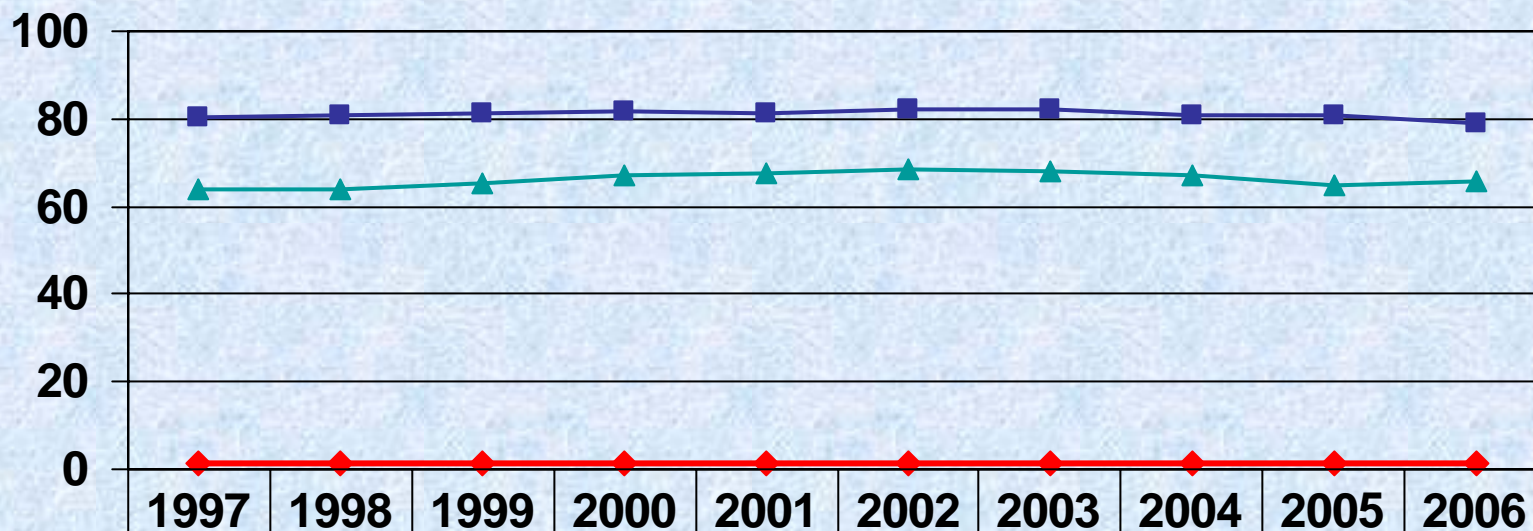


	1997	1998	1999	2000	2001	2002	2003	2004	2005	2006
■ White	1.2	1.2	1.3	1.2	1.2	1.2	1.2	1.3	1.3	1.2
▲ Black	2.8	3.0	3.1	2.9	2.9	2.6	3.3	3.0	3.3	3.3
◆ Disparity	2.3	2.5	2.4	2.4	2.4	2.2	2.7	2.3	2.5	2.7

Note: Very low birthweight is less than 1,500 grams (3 lb 5 oz).

Source: Indiana State Department of Health, PHSD, Data Analysis Team, 2008

Prenatal Care in the First Trimester: Disparity by Race, 1997-2006



	1997	1998	1999	2000	2001	2002	2003	2004	2005	2006
■ White	80.3	80.6	81.3	81.6	81.4	82.1	82.1	80.8	80.8	79.1
▲ Black	64.0	63.9	65.5	67.1	67.6	68.6	68.2	67.1	64.8	65.6
◆ Disparity	1.2	1.2	1.2	1.2	1.2	1.2	1.2	1.2	1.2	1.2

*The values are percentages of live births and include the unknowns.

Source: Indiana State Department of Health, PHSD, Data Analysis Team, 2008



**Can you see why one of these babies
has less of a chance of making it to his
first birthday?**

Neither can we.

Black babies are more than two times as likely as white babies to die their first year of life. This is a tragedy that does not need to happen. The Indiana State Department of Health wants babies to survive. And we want you to know that Black infant mortality is not a “black” problem. It’s everyone’s problem.

ISDH Disparity Initiative

1. **Fetal Infant Mortality Reviews**
2. **Perinatal Disparities Summits**
3. **Perinatal Needs Assessment**
4. **Disparity Collaborative to address the social determinates of health**
5. **Statewide Unnatural Causes town meetings**
6. **Focus groups**
7. **Provider trainings**
8. **Media campaign: “*A Healthy Baby Depends on You*”**
9. **National infant Mortality Month – September**
10. **National disparities Month – April**
11. **Black Expo - July**
12. **IPN A Call to Action: Unintended Pregnancy**
13. **“Every Woman Every Time”, Preconception/Interconception Initiative**
14. **Statewide Prenatal Care Coordination**
15. **Free Pregnancy testing Program**
16. **Work with Medicaid to improve Neonatal Outcomes, implement family planning waiver, presumptive eligibility.**

Disparity Initiative Partners

- ISDH divisions
 - Office of Minority Health
 - Indiana Minority Health Coalition
 - Local Minority Health Coalitions
 - Indiana Perinatal Network
 - Clarian Health Partners
 - Office of Medicaid Policy and Planning
 - NASW
 - MDwise, Anthem, Managed Health Services
 - IU School of Nursing
 - March of Dimes
 - ACOG/AAP
- Counties
- Marion County
 - Health Department
 - Indianapolis Healthy Start
 - Healthy Babies Consortium
 - Marion County hospitals
 - Allen County
 - Minority Health Coalition
 - Health Department
 - Healthier Moms and Babes
 - Elkhart County
 - County Health Department
 - Healthy Babies
 - Lake County
 - Health Departments
 - NW Health Start
 - MCH Network
 - Lake County Disparity counsel
 - Lake County hospitals
 - LaPorte County
 - County Health Department
 - LaPorte County Maternal and Child Health Coalition
 - St. Joseph County
 - County Health Department
 - Healthy Mothers/Healthy Babies
 - County Disparity coalition
 - County Hospitals
 - Vanderburgh County
 - County Health Department
 - SW Perinatal coalition
 - County Hospitals



UNNATURAL CAUSES

...is inequality making us sick?

EPISODE ONE

In Sickness & in Wealth

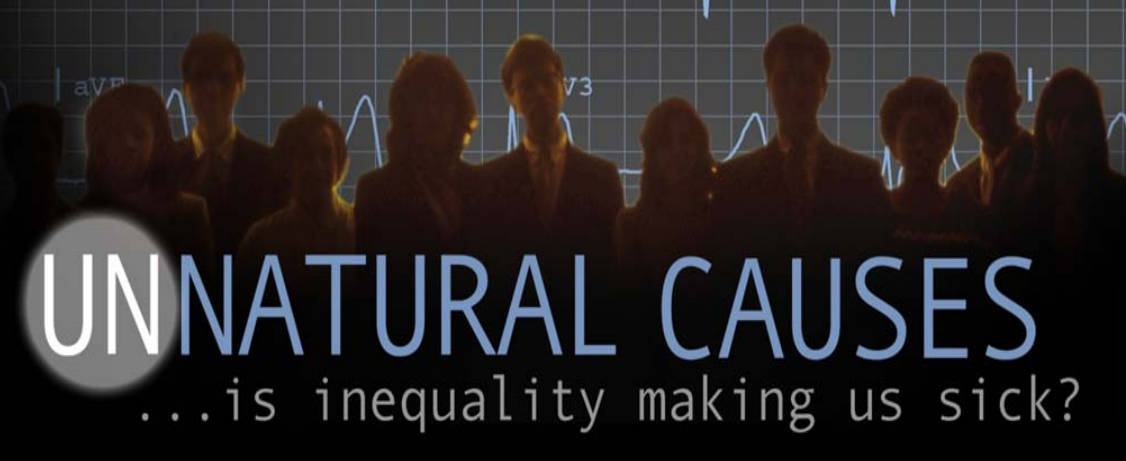
Why does the United States rank 29th in the world for life expectancy?

What connections exist between healthy bodies, healthy bank accounts, and skin color?

LUNCH AND LEARN SERIES

**September 3
Rice Auditorium
12 Noon to 1 PM**





LUNCH AND LEARN SERIES

**September 10
Rice Auditorium
12 Noon to 1 PM**

EPISODE TWO

When the Bough Breaks

What is causing our babies to die before their first birthday? And why are Black babies more than twice as likely to die than White babies?



National Media Campaign

Let's face it. Caring and planning for your baby begins long before you see your baby's precious little face. Living a healthy lifestyle. Stress reduction. Eating healthy. Continuous prenatal care... It's all part of the plan for a healthy baby. Learn the steps you need to take to ensure your baby's health. Call 1-800-444-6475. You hold the future in your hands.

A Healthy Baby Begins with You



Office of Minority Health
U.S. Department of Health and
Human Services
www.omhrc.gov

Help Stop Infant Mortality
You Hold Your Baby's Future In Your Hands

A Healthy Baby Begins with You



Universal Notification of Pregnancy (NOP) Referral Form

- Universal Notification of Pregnancy (NOP) referral form for all Medicaid providers to utilize.
- Correct and consistent use of this form will streamline pregnancy-related referrals for Providers to the MCOs, and create the ability for OMPP and the MCOs to measure pregnancy outcomes for quality.
- This form should be completed for all pregnant women enrolled in the Hoosier Healthwise program. The form should be faxed to the members assigned health plan.

Stratification of Risk

- Low, Medium, High
- Identify who will case manage at each level.